

## WATER GATE OPENING INDICATOR

# Shaft-Rotation Type(STX100 Series)

- Wide Measuring Range (30 meter is possible)
- Available for Radial gate and Sluice gate
- Good Visibility by Analog Wide Indicator
- Optional 3 type sensors can be embedded  
(Synchro transmitter, Potentiometer, Limit switch)
- High durability by simple mechanical structure
- Rainproof enclosure (IP23)
- Max. 1/200 reduction gear can be embedded depending on condition of rotation input.



## Summary

- STX100 Series is a water-gate opening indicator by directly measuring a shaft rotation of hoisting device of water gate (suitable for Sluice, Radial).
- Measured data is indicated by hand on large scale board, and optional 3 type sensors (Synchro transmitter, Potentiometer, Limit switch) are able to mount as option for output signal.
- It is widely used because of high durability against vibration, temperature and noises.

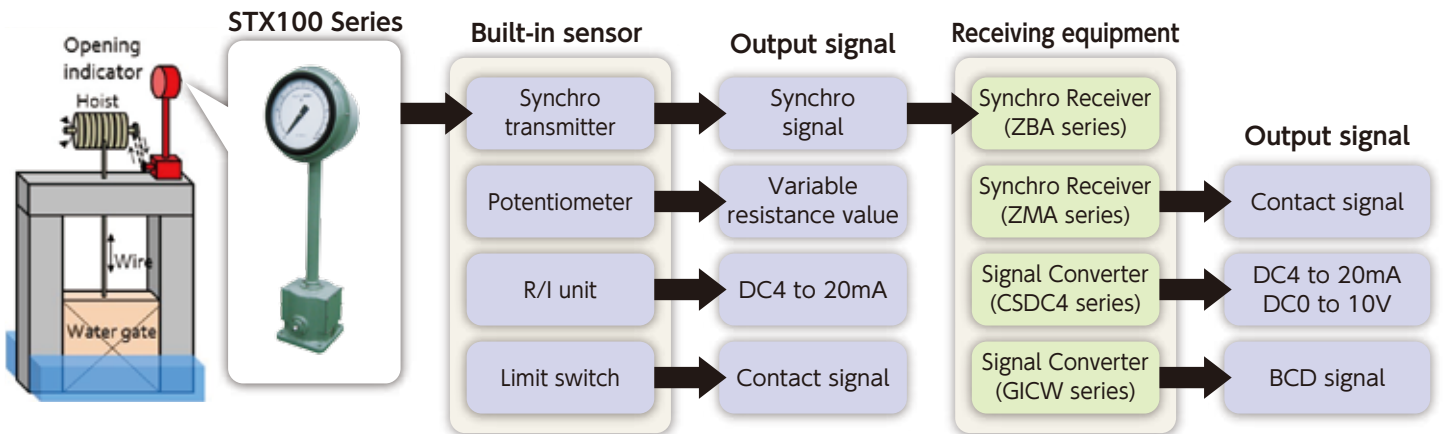
## Main specification

Ambient Temperature	-15°C to +50°C (R/I converter : -5°C to +50°C)
Ambient Humidity	30 to 90% RH (Non condensing)
Structure of Main Body	Rainproof (IP23 Equivalent)
Indicator accuracy	±0.5%F.S(Single hand) ±1cm(Double hand)
Allowable rotation speed	300r/min.
Allowable radial load	147N(15kg·f)
Allowable thrust load	98N(10kg·f)
Shaft friction torque	0.294N·m(3kg·f·cm)
Gear ratio	Single hand : Max.1/200 Double hand : Max.1/64
Weight	Approx. 50kg

## Model name: STX1[A][B]-[CD][E]

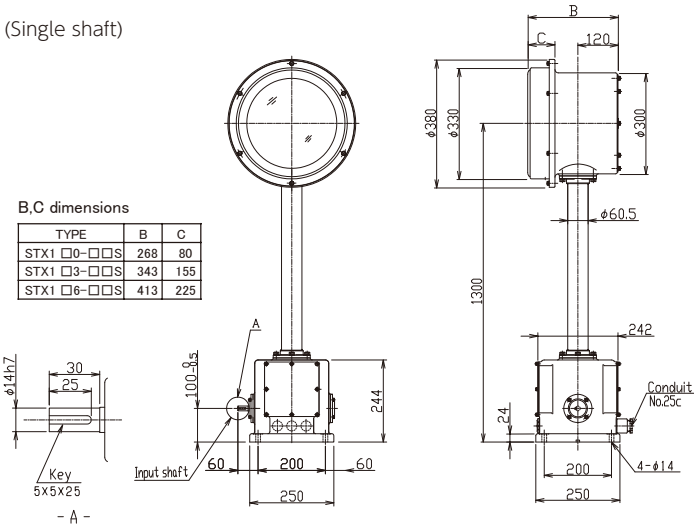
Code	Option Type	Option Detail Number
[A]	Indicator	1 : Single Hand, 2 : Double Hand
[B]	Limit Switch	0 : None, 3 : 3pcs, 6 : 6pcs
[CD]	Sensor for Output	00 : None S1 : Synchronous Motor - 86type(1pc) S2 : Synchronous Motor - 86type(2pcs) S3 : Synchronous Motor - 23type(1pc) S4 : Synchronous Motor - 23type(2pcs) SP : Synchronous Motor and Potentiometer P1 : Potentiometer(1pc) PA : DC4-20mA
[E]	Shaft	S : Single shaft(Input) D : Double shaft(Input and Output)

## System configuration

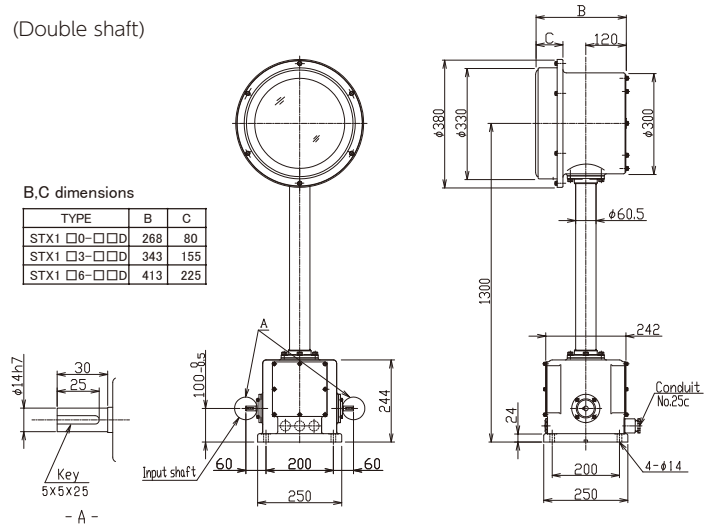


## Outline drawing

(Single shaft)



(Double shaft)



※Information in this document is subject to change without notice